

IOWA DEPARTMENT OF TRANSPORTATION

AGENDA ITEMS/COMMISSION ORDERS

Tuesday, October 11, 2011
 Hilton Garden Inn
 2701 Mid American Drive
 Council Bluffs

ITEM NUMBER	TITLE	SUBMITTED BY	PAGE
D-2012-10 8:00 a.m.	*Approve Minutes of the September 13, 2011 Commission Meeting Commission Comments Staff Comments	Connie Page	1
MV-2012-11	*Administrative Rules – Special License Plates	Paul Trombino, III	2
PPM-2012-12 8:05 a.m.	*State Recreational Trails Program Funding Recommendations	Craig Markley	6
PPM-2012-13 8:10 a.m.	*Revitalize Iowa's Sound Economy (RISE) Policies	Craig Markley	7
PPM-2012-14 8:15 a.m.	*Revitalize Iowa's Sound Economy (RISE) Application – Des Moines (Delegation)	Craig Markley	9
PPM-2012-15 8:20 a.m.	*Revitalize Iowa's Sound Economy (RISE) Application – Waukeez (Delegation)	Craig Markley	12
PPM-2012-16 8:25 a.m.	*Revitalize Iowa's Sound Economy (RISE) Application – Clinton (Delegation)	Craig Markley	15
PPM-2012-17 8:30 a.m.	*Revitalize Iowa's Sound Economy (RISE) Application – Mills County (Delegation)	Craig Markley	18
8:35 a.m.	Adjourn/Public Input Meeting		

*Action Item

On Monday, October 10, the Commission and staff will tour transportation projects in the Council Bluffs area starting at 9:30 a.m. at the Country Inn & Suites, 17 Arena Way in Council Bluffs and ending around 3 p.m. back at the hotel. The Commission and staff will hold an informal meeting at the Mid-America Center, One Arena Way, beginning at 3:30 p.m. Transportation-related matters will be discussed but no action will be taken.

DEPARTMENT OF TRANSPORTATION
COMMISSION ORDER

Division/Bureau/Office Director's Office Order No. D-2012-10
Submitted by Connie Page Phone No. 515-239-1242 Meeting Date October 11, 2011
Title Approve Minutes of the September 13, 2011, Commission Meeting

DISCUSSION/BACKGROUND:

PROPOSAL/ACTION RECOMMENDATION:

It is recommended the Commission approve the minutes of the September 13, 2011, Commission meeting.

COMMISSION ACTION:

Moved by Miles Seconded by Cleveland

	Aye	Vote Nay	Pass
Blouin	<u>X</u>	_____	_____
Cleveland	<u>X</u>	_____	_____
Miles	<u>X</u>	_____	_____
Reasner	<u>X</u>	_____	_____
Rose	<u>X</u>	_____	_____
Wiley	<u>X</u>	_____	_____
Yanney	<u>X</u>	_____	_____

Division
Director

Legal

State Director

Commission Comments

1. Monday's Commission Tour

Commission Chair Reasner said yesterday the Commission and staff toured the Council Bluffs/Omaha area, and she expressed appreciation to the DOT District staff along with the Ames staff who arranged the tour. Our tour took us along segments of I-29 and I-80 that are under construction or planned for construction. We also looked at a segment of U.S. 6 and had a chance to look at a proposed realignment of U.S. 34. We stopped at the Council Bluffs airport and saw all of the work that has occurred over the last decade. We also had a chance to talk about and view some of the flood damage. It is devastating and a little depressing to see so much debris, the farm fields covered in silt, and the damage to the roads and the rail lines but we were amazed and impressed at how quickly the Iowa DOT and their partners in contracting have managed to reopen segments. I-29 has been reopened in a very short time with only two exits still close, and I-680 is on a "super fast" schedule. The Commissioners take their hats off to Iowa DOT and the contractors who are making that possible. The Commission and staff were also hosted at the Union Pacific Harriman Dispatch Center which is a remarkable facility. It is interesting to hear about all the work that is taking place and see how much freight is moving on Union Pacific tracks and other tracks in the country which means less freight on the roads.

2. Commission Workshop Monday Afternoon

Commission Chair Reasner noted the Commission and staff held a workshop after the tour and reviewed all the materials that will be presented for Commission action today so there may not be a lot of discussion before the Commission votes on the action items.

**DEPARTMENT OF TRANSPORTATION
COMMISSION ORDER**

Division/Bureau/Office Director Order No. MV-2012-11
 Submitted by Paul Trombino III, P.E. Phone No. 515-239-1111 Meeting Date October 11, 2011
 Title Administrative Rules – Special License Plates

DISCUSSION/BACKGROUND:

The administrative rules in 761 IAC 400 and 761 IAC 401 will be amended to reflect changes made to Iowa Code sections 321.20 and 321.34 in 2011 Iowa Acts, House File 651 and Senate File 312.

The administrative rule changes clarify:

- procedures and add requirements when applying for each of seven new special license plates.
- procedures regarding a new sticker to be issued for special trucks when displaying regular registration plates or special registration license plates in lieu of a special truck plate.

On August 9, 2011, the Transportation Commission approved the emergency filing of these rules amendments. After consultation with Governor Branstad’s office, the Iowa DOT determined that the rules should not be filed by emergency procedures and should instead be filed by a regular Notice of Intended Action, which was done in the September 7, 2011, *Iowa Administrative Bulletin*.

The public comment period ended on September 27, 2011. The Iowa DOT did not receive any comments and no changes were made to the attached rule amendments. The attached proposed rules are identical in form and content to those approved by the Transportation Commission on August 9, 2011.

PROPOSAL/ACTION RECOMMENDATION:

It is recommended the Commission reaffirm its approval of the attached rule amendments.

COMMISSION ACTION:

Moved by Cleaveland Seconded by Yanney

 Division Director Legal State Director

	Aye	Vote Nay	Pass
Blouin	<u>X</u>	_____	_____
Cleaveland	<u>X</u>	_____	_____
Miles	<u>X</u>	_____	_____
Reasner	<u>X</u>	_____	_____
Rose	<u>X</u>	_____	_____
Wiley	<u>X</u>	_____	_____
Yanney	<u>X</u>	_____	_____

ITEM 1. Adopt the following **new** subrule 400.53(4):

400.53(4) *Special truck sticker.* An owner of a special truck, registered pursuant to Iowa Code section 321.121, who has been issued either regular registration plates or special registration plates other than special truck registration plates must obtain from the county treasurer a sticker which distinguishes the vehicle as a special truck. The sticker shall be affixed to the lower right corner of the rear registration plate. EXCEPTION: If the vehicle displays front and rear plates, two stickers shall be issued with one sticker affixed to the lower right corner of the front plate and rear plate. For natural resources plates, the stickers must be affixed to the lower left corner of the front and rear plates.

ITEM 2. Amend rule **761—400.53(321)**, implementation sentence, as follows:

This rule is intended to implement Iowa Code sections 321.34, 321.40, 321.41, 321.121 as amended by 2011 Iowa Acts, Senate File 312, section 3, and 321.166.

ITEM 3. Adopt the following **new** rule 761—401.18(321):

761—401.18(321) Combat infantryman badge, combat action badge, combat action ribbon, air force combat action medal, combat medical badge, fallen peace officers and civil war sesquicentennial plates. Following is the application and approval process for special plate requests under Iowa Code section 321.34 as amended by 2011 Iowa Acts, House File 651, section 2.

401.18(1) *Design.*

a. The plates shall be a standard background plate with a distinguishing processed emblem specific to each plate type, consistent with processed emblems approved pursuant to rule 761—401.15(321).

b. The distinguishing processed emblem shall be limited to "3x 3½" on the registration plate.

c. A distinguishing processed emblem owned or subject to legal rights of another person will not be used unless the department receives certification from the person that allows use of the emblem. The certification must include a statement holding the department harmless for using the emblem on a registration plate.

d. The office of vehicle services may consult with other organizations, law enforcement authorities, and the general public concerning distinguishing processed emblems.

401.18(2) Production. None of the special registration plates subject to this rule will be manufactured or issued until 250 paid applications are submitted to the department. This minimum order requirement applies to each of the special registration plates subject to this rule. Each application must be accompanied by a statutory start-up fee.

401.18(3) Discontinuance. If 250 paid applications for any special registration plate subject to this rule are not submitted within one year after the date the department makes the plate available for application, the department shall report that fact to the legislature at the next regular session of the general assembly and request authority to discontinue the special registration plate.

401.18(4) Application process.

a. Applications for either letter-number designated or personalized combat infantryman badge, combat action badge, combat action ribbon, air force combat action medal, or combat medical badge special registration plates shall be submitted to the department on a form prescribed by the department. The applicant shall attach to the application a copy of an official government document verifying award of the combat infantryman badge, combat action badge, combat action ribbon, air force combat action medal or combat medical badge to the applicant.

b. Applications for letter-number designated civil war sesquicentennial or fallen peace officers special registration plates shall be submitted to the county treasurer.

c. Applications for personalized civil war sesquicentennial or fallen peace officers special registration plates shall be submitted to the department on a form prescribed by the department.

401.18(5) Characters. Plates are limited to five characters. Personalized plates shall consist of no less than two nor more than five characters and shall be issued in accordance with subrule 401.6(2), paragraphs “a” to “d.”

401.18(6) Right of approval. The department reserves the right to approve or disapprove any application.

ITEM 4. Amend **761—Chapter 401**, implementation sentence, as follows:

These rules are intended to implement Iowa Code sections 35A.11 as amended by 2011 Iowa Acts, House File 651, section 1, 321.34 as amended by 2011 Iowa Acts, House File 651, section 2, 321.105, 321.166 and 321L.1.

**DEPARTMENT OF TRANSPORTATION
COMMISSION ORDER**

Division/Bureau/Office Planning, Programming and Modal Division
Office of Systems Planning Order No. PPM-2012-12
Submitted by Craig Markley Phone No. 515-239-1027 Meeting Date October 11, 2011
Title State Recreational Trails Program Funding Recommendations

DISCUSSION/BACKGROUND:

Review of the current round of applications for funding from the State Recreational Trails Program has been completed. The following recommendations will be presented.

Bee Branch Creek Trail-MRT Route (Dubuque)	\$100,000
Bluff Creek OHV Park Development Plan (Iowa Department of Natural Resources [DNR])	\$ 60,000
Buffalo to Wild Cat Den Road Mississippi River Trail (Buffalo)	\$108,500
Cedar Valley Nature Trail Bridge at McFarlane Park (Black Hawk County Conservation Board)	\$396,516
Central Iowa Trail Loop-Chichaqua Valley Trail to Gay Lea Wilson Trail (Polk County Conservation Board)	\$753,750
Dickinson County Spine Trail-Henderson Woods to U.S. 71 in Arnolds Park (Arnolds Park and Dickinson County Trails Board)	\$115,850
Gray's Lake Neighborhood Connecting Trail and SW 14th Quiet Street (Des Moines)	\$439,920
Gypsum City OHV Park (Webster County Improvement Corporation and Webster County Wheelers)	\$211,500
Iowa DNR Trails Program (Iowa DNR)	\$262,500
NW Beaver Drive Trail (Johnston)	\$181,464
Turkey River Recreational Corridor Trail-Elkader to Motor Mill (Clayton County Conservation Board)	\$250,000
Water Trails Planning, Design and Construction Activities 2011-2013 (Iowa DNR)	\$120,000

PROPOSAL/ACTION RECOMMENDATION:

It is recommended the Commission approve the State Recreational Trails Program funding recommendations, as listed.

COMMISSION ACTION:

Moved by _____ Seconded by _____

	Aye	Vote Nay	Pass
Blouin	_____	_____	_____
Cleaveland	_____	_____	_____
Miles	_____	_____	_____
Reasner	_____	_____	_____
Rose	_____	_____	_____
Wiley	_____	_____	_____
Yanney	_____	_____	_____

Division Director Legal State Director

PPM-2012-12

Craig Markley, Office of Systems Planning, said the State Recreational Trail program was created in 1988 for the purpose of establishing recreational trails in Iowa for the use, enjoyment, and participation of the public. This funding is available to cities, counties, state agencies, local governments, or non-profit organizations through an annual application program. Applications were due July 1, and we received 29 applications requesting just over \$12 million. Staff presented a recommendation to the Commission at the September workshop to award funding to 12 projects for a total of \$3 million. He requested Commission approval of the State Recreational Trail program funding recommendations as shown.

Commissioner Miles moved, Commissioner Wiley seconded the Commission approve the State Recreational Trails Program funding recommendations as listed. All voted aye.

DEPARTMENT OF TRANSPORTATION
COMMISSION ORDER

Division/Bureau/Office Planning, Programming and Modal Division
Office of Systems Planning Order No. PPM-2012-13
Submitted by Craig Markley Phone No. 515-239-1027 Meeting Date October 11, 2011
Title Revitalize Iowa's Sound Economy (RISE) Policies

DISCUSSION/BACKGROUND:

Policies used to evaluate and administer RISE projects have been reviewed. The attached document describes those policies.

PROPOSAL/ACTION RECOMMENDATION:

It is recommended the Commission approve the attached RISE policies.

COMMISSION ACTION:

Moved by _____ Seconded by _____

	Aye	Vote Nay	Pass
Blouin	_____	_____	_____
Cleaveland	_____	_____	_____
Miles	_____	_____	_____
Reasner	_____	_____	_____
Rose	_____	_____	_____
Wiley	_____	_____	_____
Yanney	_____	_____	_____

Division Director Legal State Director

**Revitalize Iowa's Sound Economy (RISE) Policies
For October 11, 2011, Iowa Transportation Commission's Business Meeting**

Average county wage rate

- A company's ability to meet 100 percent of the average county wage rate will be used to assist in determining RISE participation.

Default process

- Amend name from "Default Settlement" to "Project Completion Settlement."
- First 50 percent of RISE funding not subject to default calculation.
- Settlement prorated against RISE funding beyond first 50 percent.
- In evaluating job contingency requirements, consideration will be given to jobs created from a different company that locates at the site of the original RISE supported development. These jobs are subject to the same monitoring period as the original RISE development and will be evaluated based on wage rate, benefits and other RISE eligibility requirements.
- If at least 90 percent of the job creation and/or retention contingency is met at the wage rate established at the time of project approval along with at least 90 percent of the capital investment, the project is considered substantially complete.
- Default installment payments calculated based on the prime interest rate minus 3 percent.

Monitoring process

- Three years after the roadway is open to traffic, the job creation and/or retention along with the wage rate and capital investment contingencies must be met. Plus, the job creation and/or retention contingency at the wage rate established at the time of project approval must be maintained for a six-month continuous period during the three-year monitoring period.

RISE cost per job increase

- Maintain \$10,000 per job maximum.

Local development funding

- Funding used for speculative RISE eligible (nonretail) development.
- RISE participation held to 50 percent of eligible project costs.

Double access issue

- Interpretation has been to not fund RISE projects that create more than one access unless necessary to support additional entrances to a business or the project is the last link in the street/highway network. RISE funding will not be provided for more than one access unless necessary to support RISE-eligible development.

Loan interest rate

- RISE loan installment payments calculated using an interest rate between 0 percent and the 10-year U.S. Treasury bond rate based on the quality of the RISE project.

Addition of RISE funding to a previously awarded project

- Allow the addition of RISE funding by Iowa Transportation Commission approval if the road construction has not started yet or the RISE supported company construction has not been completed.

Roads/streets previously improved with RISE funding

- Additional funding for previously RISE funded projects not allowed. However, new projects for capacity improvements necessary to support immediate job creation decision will be considered.

PPM-2012-13

Craig Markley, Office of Systems Planning, said based on discussion at the September 13 Commission workshop, the RISE program policy used to evaluate and administer projects was revised; and he requested Commission approval of the revised document.

Commissioner Cleaveland moved, Commissioner Yanney seconded the Commission approve the attached RISE policies. All voted aye.

Commissioner Blouin said he appreciates the time staff spent in trying to come up with workable rules and policies. He appreciates those efforts, and he thought we may be onto something that works better.

DEPARTMENT OF TRANSPORTATION
COMMISSION ORDER

Division/Bureau/Office Planning, Programming and Modal Division
Office of Systems Planning Order No. PPM-2012-14
Submitted by Craig Markley Phone No. 515-239-1027 Meeting Date October 11, 2011
Title Revitalize Iowa's Sound Economy (RISE) Application – Des Moines (Delegation)

DISCUSSION/BACKGROUND:

The city of Des Moines submitted a RISE Immediate Opportunity application requesting a grant to assist in construction of approximately 5,400 feet of the Southeast Connector from Southeast 15th Street east to Southeast 23rd Street and associated intersection improvements located on the southeast side of town, south of Interstate 235. This project is anticipated to be completed by July 2016.

Because this project will provide access to more than 172 acres of RISE-eligible development and to maximize RISE support for this project, staff evaluated the application as a RISE Local Development project.

The evaluation and rating for the project will be discussed.

PROPOSAL/ACTION RECOMMENDATION:

It is recommended the Commission, based on the capital investment commitment and potential for future job creation, award a RISE grant of \$12,734,375 or up to 50 percent of the total RISE-eligible project cost, whichever is less, from the city share of the RISE Fund.

COMMISSION ACTION:

Moved by _____ Seconded by _____

	Aye	Vote Nay	Pass
Blouin	_____	_____	_____
Cleveland	_____	_____	_____
Miles	_____	_____	_____
Reasner	_____	_____	_____
Rose	_____	_____	_____
Wiley	_____	_____	_____
Yanney	_____	_____	_____

Division Director Legal State Director

PPM-2012-14

Craig Markley, Office of Systems Planning, said the city of Des Moines submitted an immediate opportunity RISE funding request to construct approximately 5,400 ft. of the Southeast Connector from South 15th Street east to Southeast 23rd Street and associated intersection improvements on the southeast side of town south of I-235. These improvements will provide access to more than 172 acres of RISE-eligible development. However, based on capital investment, job creation, etc., the propose RISE roadway improvement is better suited as a RISE local development project. Under RISE local development criteria, the project scored 55 points. The total estimated project cost is \$50,937,500. The city is requesting a RISE grant of \$12,734,375 and will provide a 50 percent local match. He introduced Des Moines Mayor Frank Cownie.

Mayor Cownie said this project is an opportunity to open an area that has been forgotten for a number of years but was one of their early industrial areas. It has all the infrastructure available including sewer and water and is prime for redevelopment. They have an industry looking at an immediate expansion in the area and is looking forward to having this road open. Mayor Cownie said the Southeast Connector is a complete streets project that will have bikeways, trails, sidewalks, etc.

Commissioner Miles asked when the company will begin their expansion. Rick Clark, City Manager, said Kemin has begun some of their work. Their project will be constructed in four phases and will take place over a period of two to three years. Commissioner Miles asked if they are opening a new division. Mr. Clark said they have some new product lines and are expanding for about 100 new jobs plus retaining their current jobs.

Commission Chair Reasner asked what the company makes. Mr. Clark said Kemin is an international company. They are a science-based industry and produce products that are consumed by humans and animals. From an export standpoint, over half of their business is carried outside the United States. They have been in this location for a long time, and this expansion is one of the biggest they have had. It is a great thing not only for the city but central Iowa, and this Southeast Connector is critical to that expansion.

Mr. Markley reviewed the recommendation of staff.

Commissioner Miles moved, Commission Rose seconded the Commission, based on the capital investment commitment and potential for future job creation, award a RISE grant of \$12,734,375 or up to 50 percent of the total RISE-eligible project cost, whichever is less, from the city share of the RISE fund. All voted aye.

RISE LOCAL DEVELOPMENT FUNDING
February 2011
SUMMARY

Applicant: City of Des Moines

Multiyear?: No
Multijurisdiction?: No

ROAD PROJECT LOCATION AND DESCRIPTION: To construct approximately 5,400 feet of the Southeast Connector from Southeast 15th Street east to Southeast 23rd Street and associated intersection improvements located on the southeast side of town, south of Interstate 235.

ASSOCIATED ECONOMIC DEVELOPMENT: This roadway will provide improved access to more than 172 acres for RISE-eligible development including heavy industrial, warehousing and corporate business office purposes.

PROJECT FINANCING:

Roadway Project Cost:	\$50,937,500	Local Match (Total):	\$38,203,125
RISE (Total):	\$12,734,375	Up-Front:	\$38,203,125
Grant:	\$12,734,375	NPV of Loan Repayment:	0
Loan:	0	Effective Match Percent:	75
Loan Terms:			
Yrs.	0	Up-front Participation Sources:	
Int.:	0 %	Private:	
		Public:	\$38,203,125
		Local Match (Total):	\$38,203,125

PROJECT EVALUATION:

Development Potential (35):	20
Economic Impact and Cost Effect. (20):	4
Local Commit. and Initiative (35):	24
Transportation Need (4):	3
Local Economic Need (6):	4

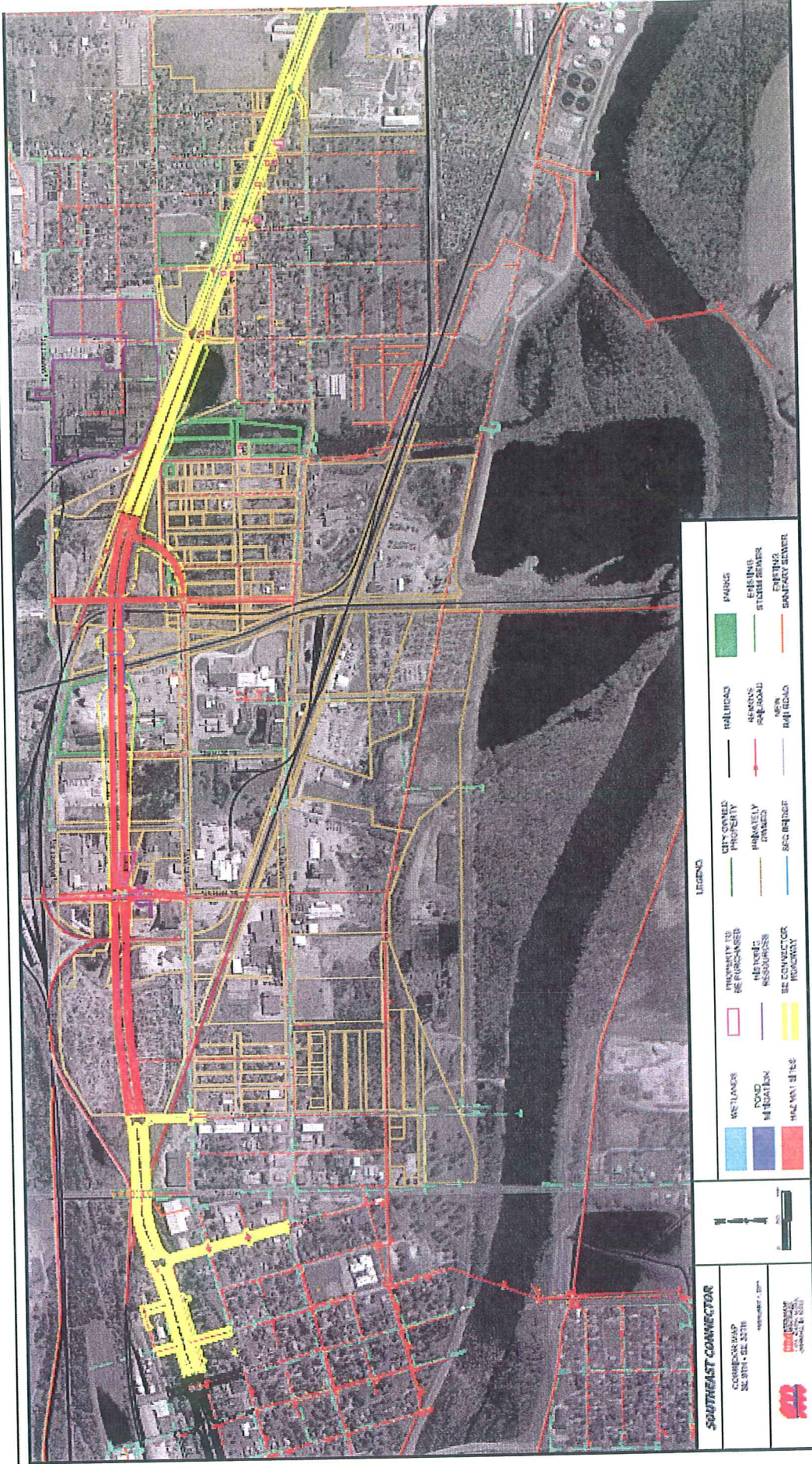
Total Rating: 55

Jobs: 55

STAFF RECOMMENDATION:

Award a grant of \$12,734,375 or up to 50 percent of the RISE-eligible project cost, whichever is less. Funding will come from the city share of the RISE fund.

Des Moines



SOUTHWEST CONNECTOR
 CONCEPT MAP
 SCL 2014-02-27/10
 November 1, 2014

LEGEND

WETLANDS	PROPERTY TO BE PURCHASED	CITY-OWNED PROPERTY	UTILITIES	PARKS
FLOOD MITIGATION	METRO'S RESOURCES	PRIVATELY OWNED	ASSESS PROPOSED	EXISTING STORM DRAIN
HAZARDOUS SITES	ICE CONNECTOR ROADWAY	ICE BRIDGE	NEW IMP ROADS	EXISTING SANITARY DRAIN

**DEPARTMENT OF TRANSPORTATION
COMMISSION ORDER**

Division/Bureau/Office Planning, Programming and Modal Division
Office of Systems Planning Order No. PPM-2012-15
 Submitted by Craig Markley Phone No. 515-239-1027 Meeting Date October 11, 2011
 Title Revitalize Iowa's Sound Economy (RISE) Application – Waukee (Delegation)

DISCUSSION/BACKGROUND:

The city of Waukee submitted a RISE Local Development application in the February 2011 round requesting a grant to assist in construction of approximately three miles of new roadway north from Ashworth Road to University Avenue located on the southeast side of town. This project is necessary to provide access to more than 123 acres for corporate business office purposes. This project is anticipated to be completed by May 2013.

The evaluation and rating for the project will be discussed.

PROPOSAL/ACTION RECOMMENDATION:

It is recommended the Commission, based on the capital investment commitment and potential for future job creation, award a RISE grant of \$5,292,428 or up to 50 percent of the total RISE-eligible project cost, whichever is less, from the city share of the RISE Fund.

COMMISSION ACTION:

Moved by _____ Seconded by _____

	Aye	Vote Nay	Pass
Blouin	_____	_____	_____
Cleveland	_____	_____	_____
Miles	_____	_____	_____
Reasner	_____	_____	_____
Rose	_____	_____	_____
Wiley	_____	_____	_____
Yanney	_____	_____	_____

Division Director Legal State Director

PPM-2012-15

Craig Markley, Office of Systems Planning, reviewed a RISE local development application from the city of Waukee to construct approximately three miles of roadway north from Ashworth Road to University Avenue located on the southeast side of town. This project is necessary to provide access to more than 123 acres for corporate office purposes. Under RISE local development criteria, this project received a rating of 44 points. Total estimated project cost is \$10,584,855. The city is requesting a RISE grant of \$5,292,428 and will provide a 50 percent local match. He introduced Brad Deets, City Development Services Director.

Mr. Deets said this project is a huge economic development project within the city of Waukee as well as a huge transportation project. Referring to an area map, he pointed out a proposed interchange they have been working on with the Department of Transportation and Federal Highway Administration, and he expressed appreciation to DOT staff for their help in the interchange justification report process. In addition to this area directly adjacent to Alice's Road, this is a much larger corridor of approximately 1,700 acres for overall development.

Mr. Markley reviewed staff's recommendation.

Commissioner Cleaveland moved, Commissioner Yanney seconded the Commission, based on the capital investment commitment and potential for future job creation, award a RISE grant of \$5,292,428 or up to 50 percent of the total RISE-eligible project cost, whichever is less, from the city share of the RISE fund. All voted aye.

RISE LOCAL DEVELOPMENT FUNDING
September 2011
SUMMARY

Applicant: Waukeee

Multiyear?: No

Multijurisdiction?: No

ROAD PROJECT LOCATION AND DESCRIPTION: To construct approximately three miles of new roadway north from Ashworth Road to University Avenue located on the southeast side of town.

ASSOCIATED ECONOMIC DEVELOPMENT: The new roadway will provide access to more than 123 acres for corporate business office purposes.

PROJECT FINANCING:

Roadway Project Cost:	\$10,584,855	Local Match (Total):	\$5,292,427
RISE (Total):	\$5,292,428	Up-Front:	\$5,292,427
Grant:	\$5,292,428	NPV of Loan Repayment:	0
Loan:	0	Effective Match Percent:	50
Loan Terms:			
Yrs.	0	Up-front Participation Sources:	
Int.:	0 %	Private:	
		Public:	\$5,292,427
		Local Match (Total):	\$5,292,427

PROJECT EVALUATION:

Development Potential (35):	15
Economic Impact and Cost Effect. (20):	10
Local Commit. and Initiative (35):	14
Transportation Need (4):	4
Local Economic Need (6):	4

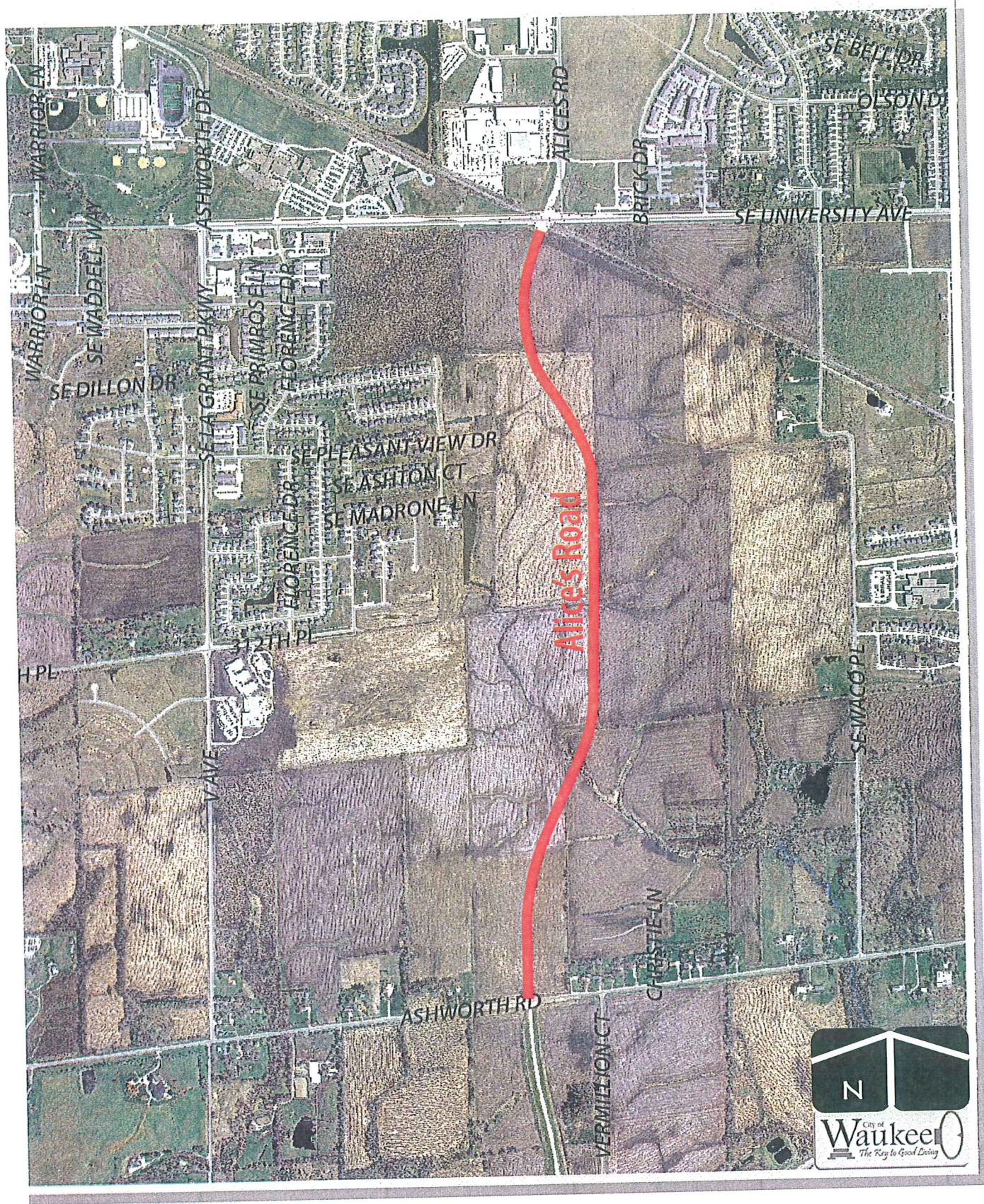
Total Rating: 47

Jobs: 0

STAFF RECOMMENDATION:

Award a grant of \$5,292,428 or up to 50 percent of the RISE-eligible project cost, whichever is less. Funding will come from the city share of the RISE fund.

City of Waukeee RISE Grant Application 2011 — Aerial Map



DEPARTMENT OF TRANSPORTATION
COMMISSION ORDER

Division/Bureau/Office Planning, Programming and Modal Division
Office of Systems Planning Order No. PPM-2012-16
Submitted by Craig Markley Phone No. 515-239-1027 Meeting Date October 11, 2011
Title Revitalize Iowa's Sound Economy (RISE) Application – Clinton (Delegation)

DISCUSSION/BACKGROUND:

The city of Clinton submitted a RISE Local Development application in the February 2011 round requesting a grant to assist in construction of approximately 1,720 feet of new roadway north from 44th Avenue South into the Lincolnway Industrial Rail and Air Park located on the southwest side of town. This project is anticipated to be completed by April 2012.

This project is necessary to provide access to nine lots totaling almost 214 acres for industrial purposes.

The evaluation and rating for the project will be discussed.

PROPOSAL/ACTION RECOMMENDATION:

It is recommended the Commission, based on the capital investment commitment and potential for future job creation, award a RISE grant of \$414,735 or up to 50 percent of the total RISE-eligible project cost, whichever is less, from the city share of the RISE Fund.

COMMISSION ACTION:

Moved by _____ Seconded by _____

	Aye	Vote Nay	Pass
Blouin	_____	_____	_____
Cleaveland	_____	_____	_____
Miles	_____	_____	_____
Reasner	_____	_____	_____
Rose	_____	_____	_____
Wiley	_____	_____	_____
Yanney	_____	_____	_____

Division Director Legal State Director

PPM-2012-16

Craig Markley, Office of Systems Planning, said the city of Clinton submitted a RISE local development application request to construct approximately 1,720 feet of new roadway north from 44th Avenue south into the Lincolnway Industrial Rail and Air Park located on the southwest side of town. This project is necessary to provide access to nine lots, totaling almost 214 acres for industrial purposes. Under RISE local development criteria, the project received a rating of 46 points. The total estimated project cost is \$829,470 and the city is requesting a RISE grant of \$414,735 and will provide a 50 percent local match. He noted Jeff Horne, City Administrator, is participating by telephone.

Mr. Horne said Mayor Rodger Holm is also participating by phone. This is a very important part of their rail park. It is the first roadway to punch in; there will be a bigger road system to the park. The city currently owns land in the park, looks forward to getting this done, and appreciates the Commission's consideration.

Steven Ames, Clinton Regional Development Corporation, said as Mr. Horne said this is the first access point into the industrial park that they are developing. They have access to the Union Pacific mainline which provides connection to west coast ports and Chicago. There is a potential of 1,000 acres in the park and since they have been developing it, they have been responding to a large number of inquiries. There is a lot of interest in their site and they are partnering with the Department of Economic Development. It is a site that can handle a mega project that needs a 1,000 acres or more so they are seeking to recruit a large industry that is looking for barge and rail capacity. It has been a true partnership between the state and region.

Mr. Markley reviewed staff's recommendation.

Commissioner Yanney moved, Commissioner Rose seconded the Commission, based on the capital investment commitment and potential for future job creation, award a RISE grant of \$414,735 or up to 50 percent of the total RISE-eligible project cost, whichever is less, from the city share of the RISE fund. Commission Chair Reasner abstained; remaining Commission members voted aye.

RISE LOCAL DEVELOPMENT FUNDING
February 2011
SUMMARY

Applicant: City of Clinton

Multiyear?: No
Multijurisdiction?: No

ROAD PROJECT LOCATION AND DESCRIPTION: To construct approximately 1,720 feet of new roadway north from 44th Avenue South into the Lincolnway Industrial Rail and Air Park located on the southwest side of town.

ASSOCIATED ECONOMIC DEVELOPMENT: The roadway will provide access to nine lots totaling almost 214 acres for industrial purposes.

PROJECT FINANCING:

Roadway Project Cost:	\$829,470	Local Match (Total):	\$414,735
RISE (Total):	\$414,735	Up-Front:	\$414,735
Grant:	\$414,735	NPV of Loan Repayment:	0
Loan:	0	Effective Match Percent:	50
Loan Terms:			
Yrs.	0	Up-front Participation Sources:	
Int.:	0 %	Private:	
		Public:	\$414,735
		Local Match (Total):	\$414,735

PROJECT EVALUATION:

Development Potential (35):	15
Economic Impact and Cost Effect. (20):	12
Local Commit. and Initiative (35):	12
Transportation Need (4):	3
Local Economic Need (6):	4

Total Rating: 46

Jobs: 425

STAFF RECOMMENDATION:

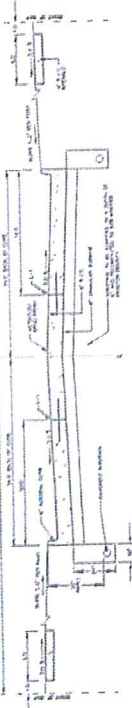
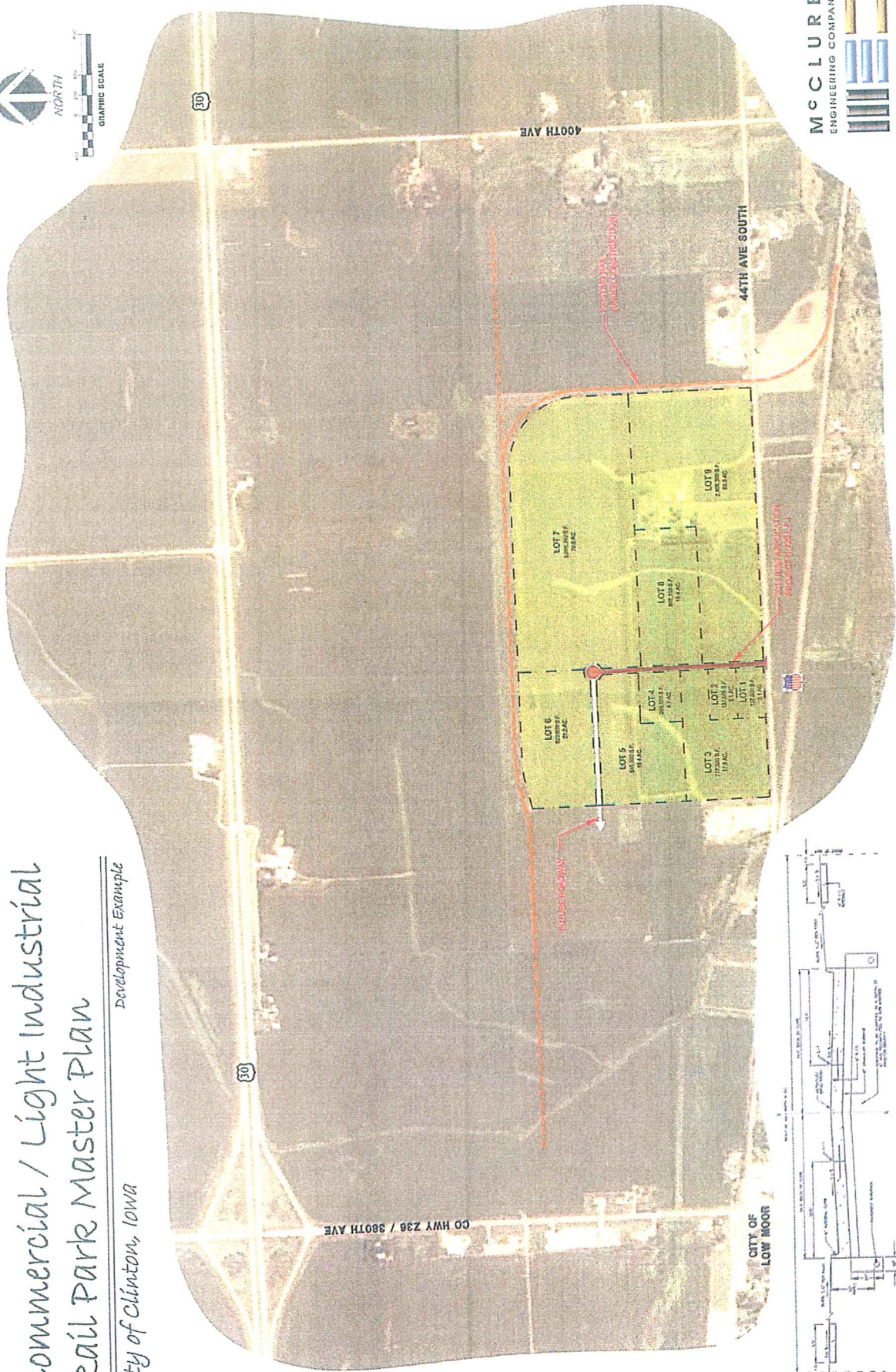
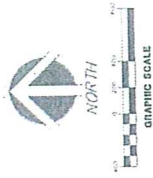
Award a grant of \$414,735 or up to 50 percent of the RISE-eligible project cost, whichever is less. Funding will come from the city share of the RISE fund.

City of Clinton

Commercial / Light Industrial Rail Park Master Plan

Development Example

City of Clinton, Iowa



LOCAL STREET SECTIONS
27. BASE TO BASE, EXCLUDING CURB, GUTTER, FAN-IN, FAN-OUT



**DEPARTMENT OF TRANSPORTATION
COMMISSION ORDER**

Division/Bureau/Office Planning, Programming and Modal Division
Office of Systems Planning Order No. PPM-2012-17
 Submitted by Craig Markley Phone No. 515-239-1027 Meeting Date October 11, 2011
 Title Revitalize Iowa's Sound Economy (RISE) Application – Mills County (Delegation)

DISCUSSION/BACKGROUND:

Mills County submitted a RISE Local Development application in the September 2011 round requesting a grant to assist in construction of approximately 5,450 feet of 190th Street north from U.S. 34 to K Avenue located west of Interstate 29. This project is necessary to provide access to six lots totaling 402 acres for industrial, transportation logistics, and warehousing purposes. This project is anticipated to be completed by September 2013.

The evaluation and rating for the project will be discussed.

PROPOSAL/ACTION RECOMMENDATION:

It is recommended the Commission, based on the capital investment commitment and potential for future job creation, award a RISE grant of \$876,510 or up to 50 percent of the total RISE-eligible project cost, whichever is less, from the county share of the RISE Fund.

COMMISSION ACTION:

Moved by _____ Seconded by _____

	Aye	Vote Nay	Pass
Blouin	_____	_____	_____
Cleveland	_____	_____	_____
Miles	_____	_____	_____
Reasner	_____	_____	_____
Rose	_____	_____	_____
Wiley	_____	_____	_____
Yanney	_____	_____	_____

 Division Director Legal State Director

PPM-2012-17

Craig Markley, Office of Systems Planning, reviewed a RISE local development application submitted by Mills county to construct approximately 5,450 feet of 190th Street north from U.S. 34 to K Avenue located on the west side of Interstate 29. This project is necessary to provide access to six lots totaling 402 acres for industrial, transportation logistics, and warehousing purposes. Under RISE local development criteria, this project received a rating of 38 points. The total estimated project cost is \$1,753,020. The county is requesting a RISE grant of \$876,510 and will provide a 50 percent local match. He introduced Kevin Mayberry, Mills County Engineer.

Mr. Mayberry expressed appreciation for the tremendous opportunity for Mills county to participate in the RISE grant program. The area served by their project represents the second largest shovel-ready industrial development area in southwest Iowa along the I-29 corridor. They look forward to the Commission's partnership in bringing much needed jobs to Southwest Iowa with this project. Mills county has already invested funds in the infrastructure needs that serve the area west of I-29 exits 32 and 35; that includes bringing public sewer and water to the area as well as some paved roads. The economic development foundation has also secured options on land in the area to market to interested developers and companies. The county has also developed a master plan that is included in the county zoning ordinance and comprehensive plan to properly and carefully build this area into a first class job producing site. The inclusion of a paving project to connect the 190th Street corridor to both new and old U.S. 34 would provide the missing piece of their planning, and they are excited about the possibilities that the RISE grant offers them.

Richard Crouch, Chair, Mills County Board of Supervisors, said they appreciate the help and partnership that the Commission puts into this RISE grant for the development that it is going to bring jobs into the county in the near future.

Mr. Markley reviewed staff's recommendation.

Commissioner Cleaveland moved, Commissioner Wiley seconded the Commission, based on the capital investment commitment and potential for future job creation, award a RISE grant of \$876,510 or up to 50 percent of the total RISE-eligible project cost, whichever is less, from the county share of the RISE fund. All voted aye.

Meeting adjourned at 8:30 a.m.

RISE LOCAL DEVELOPMENT FUNDING
September 2011
SUMMARY

Applicant: Mills County

Multiyear?: No
Multijurisdiction?: No

ROAD PROJECT LOCATION AND DESCRIPTION: To construct approximately 5,450 feet of 190th Street from U.S. 34 north to K Avenue located west of Interstate 29.

ASSOCIATED ECONOMIC DEVELOPMENT: The new roadway will provide access to six lots totaling 402 acres for industrial, transportation logistics, and warehousing purposes.

PROJECT FINANCING:

Roadway Project Cost:	\$1,753,020	Local Match (Total):	\$876,510
RISE (Total):	\$876,510	Up-Front:	\$876,510
Grant:	\$876,510	NPV of Loan Repayment:	0
Loan:	0	Effective Match Percent:	50
Loan Terms:	Yrs. 0	Up-front Participation Sources:	
	Int.: 0 %	Private:	
		Public:	\$876,510
		Local Match (Total):	\$876,510

PROJECT EVALUATION:

Development Potential (35):	15
Economic Impact and Cost Effect. (20):	2
Local Commit. and Initiative (35):	16
Transportation Need (4):	2
Local Economic Need (6):	3

Total Rating: 38

Jobs: 0

STAFF RECOMMENDATION:

Award a grant of \$876,510 or up to 50 percent of the RISE-eligible project cost, whichever is less. Funding will come from the county share of the RISE fund.

IOWA DEPARTMENT OF TRANSPORTATION
PUBLIC INPUT MEETING
Hilton Garden Inn
2701 Mid American Drive, Council Bluffs
October 11, 2011

<u>TIME</u>	<u>DELEGATION</u>	<u>SPOKESPERSON</u>
8:35 am	Opening Remarks	Amy L. Reasner, Commission Chair
8:40 am	Council Bluffs	Mayor Tom Hanafan
8:55 am	Omaha	Mayor Jim Suttle
9:00 am	Council Bluffs Chamber of Commerce/ Pottawattamie County Growth Alliance	Bob Mundt
9:15 am	Missouri Valley	John McCurdy
9:25 am	SW Iowa Coalition	Larry Winum
9:35 am	US 30 Coalition	Scott Wernimont
9:50 am	Golden Hills RC&D	Liz Birkel-Leddy
10:00 am	Unscheduled Delegations - None	

Message from the Commission:

Welcome to the Iowa Transportation Commission (Commission) public input meeting. As I said earlier, during our business meeting, the Commission travels to different locations in the state every April, June, August and October in an effort to review ongoing or proposed projects. This is also our opportunity to hear from any member of the public who wants to address the Commission about any transportation topic. We welcome those comments.

Many of you in the audience are representatives of cities, counties, planning organizations or coalitions organized around a particular transportation goal. And, many of you representatives occasionally attend these public input meetings in order to thank the Commission for past project assistance, or to propose new partnerships. We welcome those comments, as well. However, please understand that in some cases the Commission is hearing about a proposed project for the first time, so that we may have questions about the project, but we would not have any ability to comment on the merits of the proposal until we receive staff input and until we begin our planning sessions (typically held every January to April). And, in some cases, the Commission is hearing about a proposed project that it has reviewed in the past but will have no comment as the project is not in the five year program at this time and we cannot say until our planning sessions whether the project will become eligible for funding in the five year program. Please consider this an opportunity for you to share your thoughts and concerns with us, and for us to consider those thoughts and concerns as well as review them with staff after gathering necessary information about the how the issues may impact our various grant programs or our five year transportation program.

As always, you can find out more about the Commission and our meetings at www.iowadot.gov/commission/commission.htm or you may reach out to us via email or telephone at our contact information listed on that web page.

Amy L. Reasner, Chair
Iowa Transportation Commission